

# HYUNDAI IONIQ 6 ELECTRIC

Quick Reference Guide



Roadside Assistance: 1-800-243-7766

Consumer Affairs: 1-800-633-5151

Sirius XM<sup>®</sup> Radio: 1-800-967-2346

Bluelink: 1-855-2BLUELINK  
(1-855-225-8354)

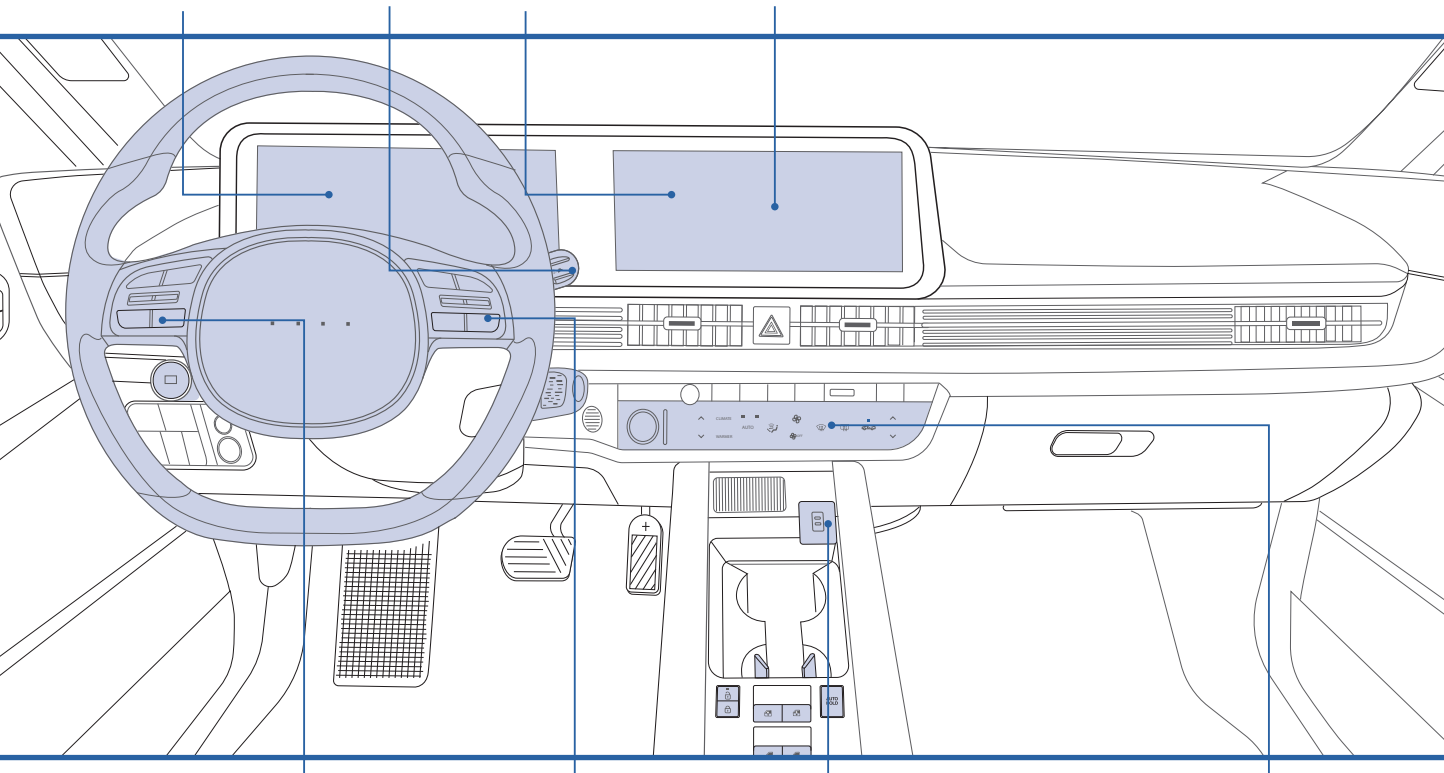


Instrument Cluster  
Page 11

Wipers and Washer  
Page 07

Navigation  
Page 26

EV system modes,  
LCD display control & modes  
Page 16



Steering wheel audio controls  
Page 19

Smart Cruise Control  
Page 29

USB port  
Page 15

Dual Automatic Temperature Control  
Page 17

## HYUNDAI VEHICLE OWNER PRIVACY POLICY

Your Hyundai vehicle may be equipped with technologies and services that use information collected, generated, recorded or stored by the vehicle. Hyundai has created a Vehicle Owner Privacy Policy to explain how these technologies and services collect, use, and share this information.

You may read our Vehicle Owner Privacy Policy on the Hyundaiusa.com website at <https://www.hyundaiusa.com/owner-privacy-policy.aspx>. If you would like to receive a hard copy of our Vehicle Owner Privacy Policy, please contact our Customer Care Center at:

Hyundai Customer Care  
P.O. Box 20850  
Fountain Valley, CA 92728  
800-633-5151  
[consumeraffairs@hmasua.com](mailto:consumeraffairs@hmasua.com)

Hyundai's Customer Care Center representatives are available Monday through Friday, between the hours of 6:00 AM and 5:00 PM PST and Saturday between 6:30 AM and 3:00 PM PST (English).

For Customer Connect Center assistance in Spanish or Korean, representatives are available Monday through Friday between 6:30 AM and 3:00 PM PST.

**WARNING!**

To reduce the risk of serious injury to yourself and others, read and understand the important SAFETY INFORMATION in your Owner's Manual.

Use this Quick Reference Guide to learn about the features that will enhance your enjoyment of your Hyundai. More detailed information about these features are available in your Owner's Manual.

## FEATURES AND CONTROLS

|  |           |
|--|-----------|
| Automatic climate control system                 | 17        |
| Aux. battery saver+                              | 14        |
| <b>Charging door</b>                             | <b>05</b> |
| <b>Driver's main controls</b>                    | <b>03</b> |
| Electric vehicle system modes                    | 16        |
| Hands free smart trunk                           | 04        |
| High voltage battery SOC (state of charge) gauge | 13        |
| Homelink wireless control system                 | 09        |
| <b>Instrument cluster</b>                        | <b>11</b> |
| Key hole access (driver door)                    | 08        |
| <b>LCD display control</b>                       | <b>14</b> |
| <b>LCD display modes</b>                         | <b>14</b> |
| <b>Power trunk operation</b>                     | <b>04</b> |
| Seat-Driver position memory system               | 03        |
| Seat-Heated/Ventilated front seats               | 01        |
| Seat-Power driver's seat adjustment              | 01        |
| Seat-Folding rear seats                          | 02        |
| USB charger                                      | 15        |
| <b>USB port</b>                                  | <b>15</b> |
| Vehicle power gauge                              | 13        |
| Warnings and indicators                          | 11        |
| Wipers and washer                                | 07        |
| Wireless cellular phone charging system          | 15        |

## INFOTAINMENT

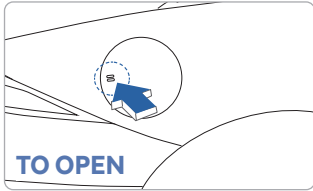
|   |           |
|---|-----------|
| <b>Apple CarPlay &amp; Android Auto Setup</b> | <b>21</b> |
| Bluelink connected car system                 | 22        |
| Bluetooth® audio quality tips                 | 20        |
| Bluetooth® operational tips                   | 20        |
| Bluetooth® phone operation                    | 19        |
| Bluetooth® phone pairing                      | 19        |
| Navigation                                    | 26        |
| Radio mode                                    | 25        |
| Steering wheel audio control                  | 19        |
| <b>Voice recognition tips</b>                 | <b>22</b> |

## DRIVING

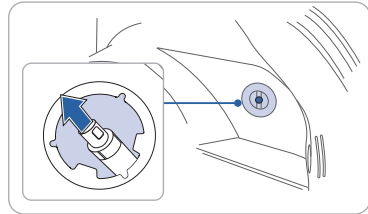
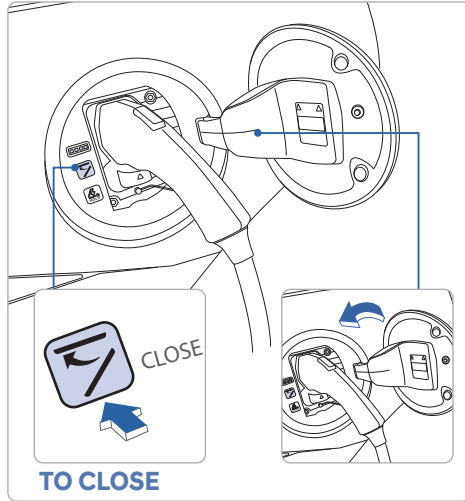
|   |           |
|---|-----------|
| Blind-Spot Collision-Avoidance Assist (BCA) | 32        |
| Battery conditioning mode                   | 34        |
| Drive mode                                  | 36        |
| Electronic parking brake (EPB)              | 30        |
| Forward Collision-Avoidance Assist (FCA)    | 31        |
| Highway Driving Assist (HDA)                | 30        |
| Lane Keeping Assist (LKA)                   | 31        |
| Near field communication (NFC)              | 35        |
| Regenerative brake level control paddles    | 27        |
| Shift By Wire Gear Selector                 | 27        |
| <b>Smart Cruise Control (SCC)</b>           | <b>29</b> |
| Tire pressure monitoring system (TPMS)      | 33        |

\* Some vehicles may not be equipped with all the listed features.

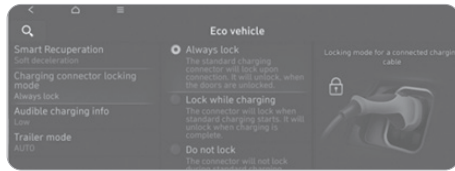
## CHARGING DOOR



To open, while vehicle is unlocked, press on the outside of the charging door or use Voice Recognition. After recharging, install the bottom inlet cover first before installing the upper inlet cover. Press the close button to close the charging door.



**Emergency Charge Connector Release:**  
If the charging cable will not release, open the trunk and pull the emergency cable.

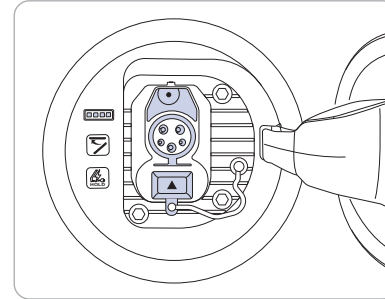


**Charging Connector Lock**  
Locking mode for connected charging cable.  
Select Settings → ECO Vehicle → Charging Connector Locking Mode

|                   | Always lock | Lock while charging | Do not lock |
|-------------------|-------------|---------------------|-------------|
| Before charging   | ○           | ×                   | ×           |
| While charging    | ○           | ○                   | ×           |
| Finished charging | ○           | ×                   | ×           |

## Charging Status

Electric Charging door



| Charge Indicator light | SOC (%) |
|------------------------|---------|
|                        | 0~24    |
|                        | 25~49   |
|                        | 50~74   |
|                        | 75~100  |

## Scheduled Charging Override



If you have a charge schedule set and would like to charge your vehicle outside that window, you can press and hold the button after plugging your vehicle in and it will start charging.

## INSTRUMENT CLUSTER



- 1 Speedometer
- 2 Power/Charge gauge
- 3 Distance to empty
- 4 Warning and indicator lights
- 5 Cluster display
- 6 Battery SOC (State of Charge) gauge

### WARNINGS AND INDICATORS

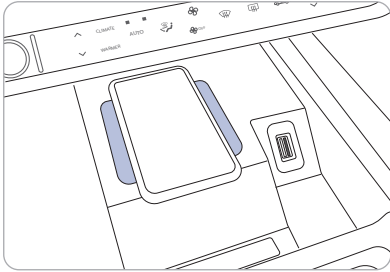
|  |  |  |
|--|--|--|
| READY Ready indicator light                | Service warning light  | Power down warning light                               |
| Charging indicator                         | High voltage battery low level warning light                   | Air bag warning light                                  |
| Seat belt warning light                    | Parking brake & brake fluid warning light                      | EPB Electric Parking Brake (EPB) warning light         |
| Anti-lock Brake System (ABS) warning light | Electronic Brake force Distribution (EBD) System warning light | Motor Driven Power Steering (MDPS) warning light       |
| Regenerative brake warning light           | Low tire pressure warning light                                | AUTO HOLD indicator                                    |
| Lane Safety Indicator                      | Forward Safety Warning Light                                   | LED headlamp warning light                             |
| Master warning light                       | Electronic Stability Control (ESC) Indicator Light             | Electronic Stability Control (ESC) OFF indicator light |
| Low beam indicator light                   | Immobilizer indicator  | Turn signal indicator light                            |
| High beam indicator light                  | Light ON indicator light                                       | Driver attention warning light                         |
| High beam assist indicator light           |  |  |

### Main indicators in cluster for Electric Vehicle

- READY**  
When the vehicle is ready to be driven, this indicator is illuminated.  
When the ready indicator goes off or blinks, we recommend the vehicle be checked by an authorized HYUNDAI dealer.
- Service warning light**  
If a problem with the electric vehicle control system occurs, the service warning light will illuminate. We recommend the vehicle be checked by an authorized HYUNDAI dealer.
- Power down warning light**  
When the vehicle power should be limited for the safety of the electric vehicle, this warning light illuminates. Charge the battery immediately when the high voltage battery level is not enough.
- Charging cable indicator**  
This indicator shows the charging status of the high voltage battery.  
• When a charge cable is connected, the indicator illuminates in red. The approximate charge time will be displayed on the dash after a few minutes.
- High voltage battery low level warning light**  
This warning light illuminates when the high voltage battery level is low.  
When the warning light turns ON, charge the battery immediately.

**NOTE:** DC Quick charge session is time limited and may not reach maximum charge in one session depending on initial battery % SOC. The maximum charge possible in Ioniq Electric is 94% SOC on a DC Quick charger which will show a slightly lower range than with Level-1 and 2 chargers with maximum possible charge to 100%SOC.

## WIRELESS CELLULAR PHONE CHARGING SYSTEM



There is a wireless cellular phone charging system in front of the cup holders. The system operates with all doors closed, and the Engine Start/Stop button in the ACC/ON/START position.

Wireless charging system can be disabled in the instrument cluster settings menu.

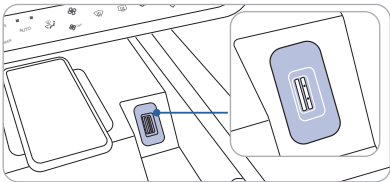
**NOTE:** The wireless cellular phone charging system supports only the Qi-enabled cellular phones (Qi).

**NOTE:** Do not place any metallic items such as coins, keys on the charger. Avoid placing credit cards on the charger as they may be damaged by the magnetic field.

The charging area may be warm while using wireless charging.

**NOTE:** Wireless charger will deactivate whenever a door is opened.

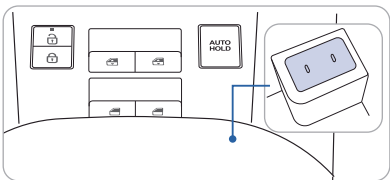
## USB PORT



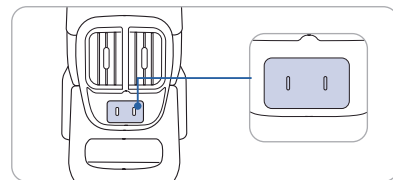
Use a USB-A cable to connect an external audio device and listen to it through the audio system in your vehicle.

## USB CHARGER

### FRONT USB CHARGER



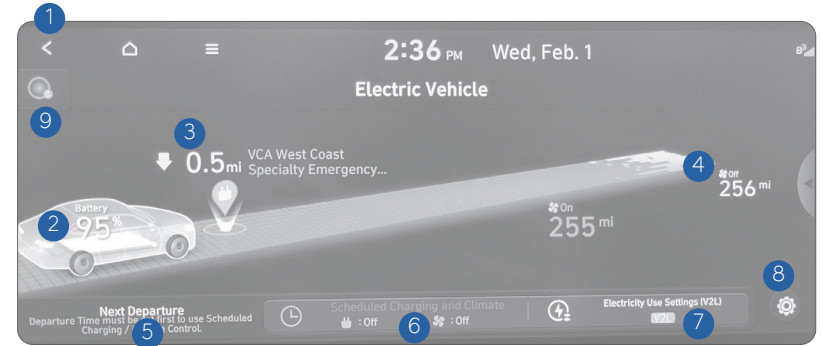
### REAR USB CHARGER



The USB charger is designed to recharge batteries of small size electrical devices using a USB-C cable.

The electrical devices can be recharged when the Start/Stop button is in the ON or START position.

## ELECTRIC VEHICLE SYSTEM MODES



- 1 Returns to the previous step.
- 2 View the current battery level.
  - ✎ If you press the vehicle image, the energy information screen appears.
- 3 Can search for nearby charging stations.
  - ✎ The details of charging stations displayed on the map screen may not match the actual information.
- 4 View the distance to empty for the current climate control settings.
  - ✎ The details of drivable range displayed on the map screen may not match the actual information.
- 5 Set the next departure time. ▶ See "Setting the next departure time."
- 6 Configure settings to perform charging and/or climate control according to the departure time. ▶ See "Scheduling a charge and climate controls."
- 7 Set an electricity usage limit. ▶ See "Setting an electricity usage limit."
  - V2L: This technology uses the battery power of an electric vehicle to power electronic devices in the vehicle.
- 8 You can set to enable the Electric Vehicle mode. ▶ See "Configuring the EV settings."
- 9 Shows the solar roof charging status (if equipped).